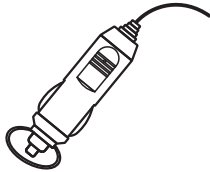


## SPECIFICATION

Power Supply Voltage  
Factory set password

12V~30V DC, Negative Ground  
"113266"



*Portable car player*  
*CarPlay(wired+WiFi)*

Portable car player

# KLEVA<sup>®</sup> SmartPlay™

## Carplay Manual



**SCAN ME**  
TO WATCH  
HOW TO SET UP VIDEOS



## Function Description

### Left Side of Screen

#### **AUX**

A cord that allows your phone, or whatever device you have with a headphone jack to connect

#### **AV IN**

Video input interface. Connect your own reversing camera through the 2.5mm plug 1 RCS cable.

#### **USB**

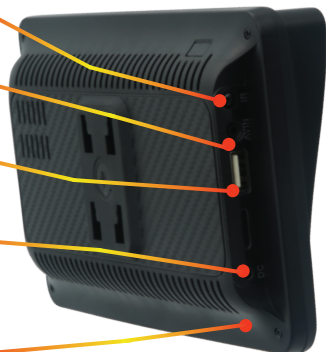
Used to plug in your charging cable of your mobile device to allow you to connect through to CarPlay, Android Auto or Mirror Link.

#### **TF Card**

A TF card port allows you to insert a small memory card to expand storage or access media files. You can store and retrieve photos, videos, and music directly from the TF card.

#### **Power Point (DC 12V)**

Input panel in which you plug the cigarette lighter power cable into, to power the SmartPlay™.



### Right Side of Screen



#### **Remote Control Sensor**

A remote control sensor receives signals from a remote control device, enabling wireless operation of electronic appliances or devices.

## How to install the Mounting Bracket:

1. Please clean the car surface. To suction the mounting bracket, place it on your desired surface and push down on the locking lever. When you hear a click, you'll know it is locked. (Refer to image A)
2. How to attach the back clip: Turn the locking dial on the clip anti-clockwise to loosen. Place the mounting bracket clip on the back of the SmartPlay™ and push up until you hear a loud click into place. Attach to the mounting bracket and turn clockwise to lock.
3. How to adjust the neck length: Turn the locking dial anti-clockwise to loosen. Pull the neck up or down to adjust to your desired length. Turn clockwise to lock.
4. How to adjust the neck height: Turn the locking dial closest to the suction base anti-clockwise to loosen. Move it up or down to reach your desired viewing height. Turn clockwise to lock.



Image A



Push down on lock-in lever to suction.

### Installation example:



Can be installed on the car front windshield or dashboard.

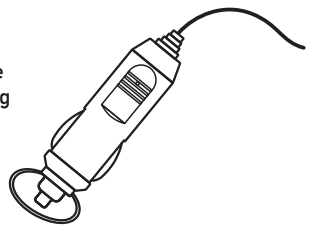


## Cigarette Lighter Power Plug

This device is powered by the cigarette lighter power plug. To power the SmartPlay™, first plug the power cord into the DC port on the left-hand side of the screen. Then, connect the other end of the power cord into the cigarette lighter port of your car, to turn it ON.

Image 1

Standard Cigarette  
Lighter Power Plug



## Bluetooth Pairing Connection

You can use Bluetooth music or Bluetooth calls. when using wireless CarPlay, you need to pair the Bluetooth connection first.

Device Bluetooth Name: "SWL-BT"

PIN Number: "0000" or "1234" (if need)

Connection Method:

- 1. Power on the machine and turn on it.
  - 2. Turn on the Bluetooth function on your mobile phone, Click to search for devices, and when the Bluetooth name of the current machine is found, click to connect.
- Then add the above pin code when prompted on your phone. You will now be connected.

## How to connect SmartPlay™ sound to your car speakers

On the FM Transmitter page of the SmartPlay™ there are 6 preset channels that can be used to set the sound to come out of the radio. If you find that those recommended channels on the SmartPlay™ are already in use on your car radio, you will need to find a free channel on the radio and set that up on your SmartPlay™, to do this follow the below steps:

Change the frequency of your car radio: To do this go to the radio function of your car, turn the dial to an unused channel where you hear only static or no sound, as channels with music or talking are already in use and cannot be connected to. On your SmartPlay™ home screen select the blue FM transmitter icon and slide your finger across the screen to adjust the SmartPlay™ channel to match the free radio channel you have selected in your car. Sound will now play from the car speakers.

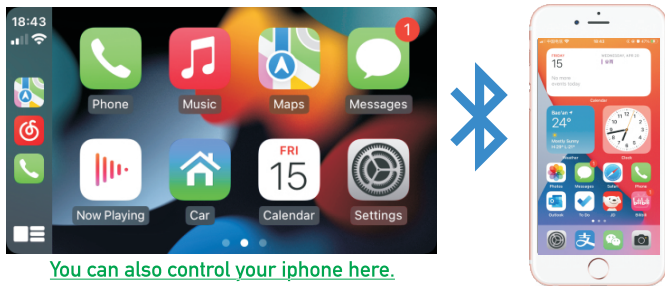
## How to operate your remote control

First ensure that you have inserted 2x AAA batteries into the remote, the batteries are not included. The sensor for your SmartPlay™ remote is on the bottom right-hand side of the unit. When in use, make sure to keep the remote close to the sensor for the best experience. Please note the sensor on the end of the remote does not light up, even when it is connected to the device!

Ensure the remote control is near the sensor to operate. remote control sensor is near the right hand side of the unit.



## How to connect to CarPlay using Bluetooth (iPhone)



[You can also control your iPhone here.](#)

Plug the cigarette lighter power cable into the left hand side of the SmartPlay™ input panel (it is labelled DC 12V and it is the last option on the panel). Now plug the other end into the cigarette lighter (View Image 1) port of your car. (Note: Your car ignition must be turned on to power the SmartPlay™)

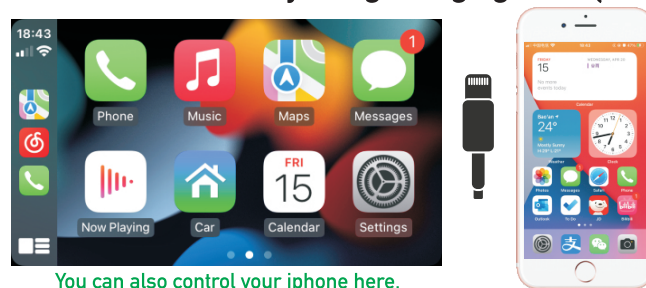
Once the SmartPlay™ is powered on you will be taken to the FM transmitter page, from there press the back arrow on the top left corner of your screen. You will now see the SmartPlay™ home screen.

From the SmartPlay™ home screen select PhoneLink. Once on the PhoneLink page under iPhone ensure that Auto Connect is set to CarPlay.

Keeping the SmartPlay™ on the PhoneLink page, open settings on your iPhone and select Bluetooth. On your iPhone screen, under devices, select SWL-BT from there it will now ask you to add a pin number to pair the phone to the SmartPlay™ device which is "0000", once you have typed that pin number in select "pair" on the top right corner of your iPhone screen.

From there your iPhone will automatically connect to the CarPlay feature.

## How to connect to CarPlay using Charging Cable (iPhone)



[You can also control your iPhone here.](#)

Plug the cigarette lighter power cable into the left hand side of the SmartPlay™ input panel (it is labelled DC 12V and it is the last option on the panel). Now plug the other end into the cigarette lighter port of your car. (Note: Your car ignition must be turned on to power the SmartPlay™)

Once the SmartPlay™ is powered on you will be taken to the FM transmitter page, from there press the back arrow on the top left corner of your screen. You will now see the SmartPlay™ home screen.

From the SmartPlay™ home screen select PhoneLink. Once on the PhoneLink page under iPhone ensure that Auto Connect is set to CarPlay.

Use your own iPhone charging cable plug it into the left hand side of the SmartPlay™ input panel (It is labelled with a USB icon and is the third option down rectangular in shape) and plug the other end of the cable into your iPhone. From there you will be taken to the CarPlay feature of the SmartPlay™. (Note: In some instances you may need to unlock your iPhone for the SmartPlay™ to connect to CarPlay)

## How to connect to Android Auto using Bluetooth(Android)

To connect to the Smartplay™ through Bluetooth on an android phone. Please make sure your android system software on your phone is up to date. ( You can do this by going to settings on your phone (the silver cogwheel icon), scroll down to the bottom of the list and click on software update. Click into Download and install and update to the newest software available on your device. Bluetooth connection will only work with Android version 11 and above. Android 8 and above can be used by connecting a USB cable to the Smartplay™.)

Plug the cigarette lighter power cable into the left hand side of the SmartPlay™ input panel (it is labelled DC 12V and it is the last option on the panel). Now plug the other end into the cigarette lighter port of your car. (Note: Your car ignition must be turned on to power the SmartPlay™)

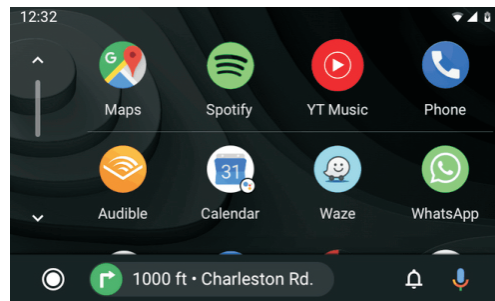
Once the SmartPlay™ is powered on you will be taken to the FM transmitter page, from there press the back arrow on the top left corner of your screen. You will now see the SmartPlay™ home screen.

On your Android phone go to settings (the silver cogwheel icon) and click into connections. From here, scroll down until you find Bluetooth and click into it. Make sure it is switched to ON.

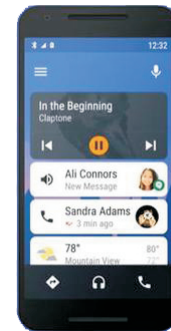
On bluetooth, scan for new devices and click on SWL-BT when it appears in available devices. You will now be asked to pair your device on your phone. It will ask you for a pin, The pin is **0000**. Type it into the space and select pair on your phone. Allow for access by clicking ok on your phone.

Your screen on your Smartplay™ will now say connecting. Please wait a moment until the maps appear on the screen.

## How to connect to Android Auto using Charging Cable(Android)



[You can also control your android phone here.](#)



Plug the cigarette lighter power cable into the left hand side of the SmartPlay™ input panel (it is labelled DC 12V and it is the last option on the panel). Now plug the other end into the cigarette lighter port of your car. (Note: Your car ignition must be turned on to power the SmartPlay™)

Once the SmartPlay™ is powered on you will be taken to the FM transmitter page, from there press the back arrow on the top left corner of your screen. You will now see the SmartPlay™ home screen.

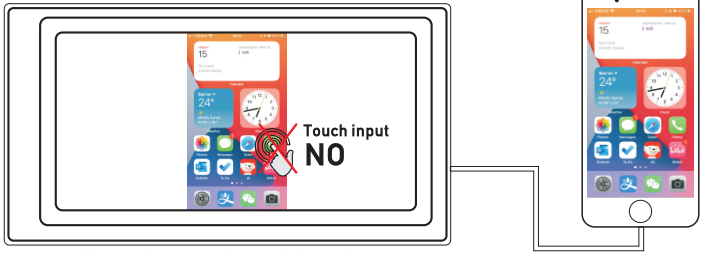
Use your own Android charging cable plug it into the left hand side of the SmartPlay™ input panel (It is labelled with a USB icon and is the third option down rectangular in shape) and plug the other end of the cable into your Android.

From the SmartPlay™ home screen select PhoneLink.

Your screen on your Smartplay™ will now say connecting. Please wait a moment until the maps appear on the screen.

## Mirrorlink ( iPhone )

When the device is plugged into the iPhone, the content of the phone screen will be projected onto the car screen.

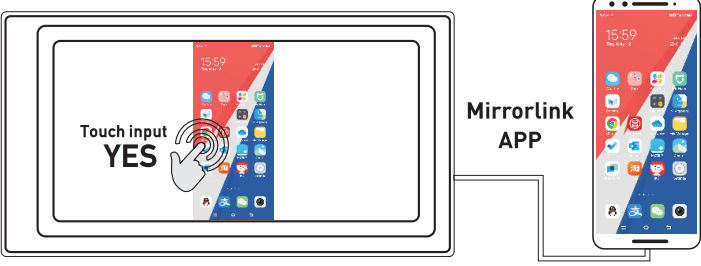


You can't control your iphone here.

## Mirrorlink ( Android )

When using an Android device, after connecting the USB data cable, you will be prompted to install the APP software. After installation, Plug the data cable again, it will enter the screen mirroring mode. And it can be operated on both the player screen and the phone screen.

Only the image transfer is successful at this time. The sound can only be transmitted after the Bluetooth connection is successful.



You can also control your android phone here.

## Hints & Tips

### **Struggling to be heard while on a phone call?**

- Go to 'Setup'
- Go to Factory Set
- Input password: 113266
- Configure Settings
- Scroll down to mic gain, change to 70
- Scroll down and select 'save touch data'

This will improve the receiving level of the microphone, ensuring you can be heard on the other end of your call.

### **How to use voice control for the SmartPlay™?**

To turn on Voice Access, follow these steps:

- Open your device's Settings app
- Tap Accessibility, then tap Voice Access
- Tap Use Voice Access

Start Voice Access in one of these ways:

- If "Hey Google" detection is on, you can say "Hey Google, Voice Access."
- Open your notification shade and tap Touch to start
- On your Home screen, tap the Voice Access app
- Tap the Voice Access activation button (You can set up the activation button in the Settings - Accessibility - Voice Access - Settings - Activation button)
- Say a command, such as "Open Gmail." Learn more Voice Access commands

### **Why is my phone call not coming out of my car speakers?**

With regards to volume, please ensure the volume on your phone, SmartPlay™ and car radio/speakers are all turned up to max. When you take a call, the volume is automatically lowered so you need to turn this up on your car radio/speakers.

### **Why can people not hear me on a phone call?**

Please also ensure the bluetooth in your car's system is turned off. Otherwise your phone will try to connect to your car's Bluetooth instead of the SmartPlay™!

### **How to change the language of the SmartPlay™?**

On the SmartPlay™ home screen, select the yellow "Setup" icon on the bottom right corner of the screen. On the left hand side scroll down to the "System preference" and select language. Scroll up and down on the screen to select your chosen language.

### **How to adjust the sound of the SmartPlay™?**

Drag down from the very top of the screen to view the sound and brightness adjustment bar.

### **How to adjust the volume of the SmartPlay™ when on Apple Carplay?**

Press on the white circular icon on the right-hand side of the screen to view the sound adjustment panel.

### **How to recalibrate the screen of the SmartPlay™?**

If your SmartPlay™ screen is not responding to your touch or is pressing different buttons, you may need to recalibrate your screen. To do this, please place all 5 fingertips on your SmartPlay™ screen at the same time when it is turned on. Your screen should then be recalibrated.

If you are still having troubles installing your Kleva SmartPlay™ ask your friend, your neighbour or a family member to see if they can help you.

Scan below QR Code to watch all our handy how to install your SmartPlay™ set up videos.

**SCAN ME**



(Reversing Camera not included, to be purchased separately)

## REVERSING CAMERA CONNECTION (CCD)

The reversing video input can be connected through the RCA adapter cable. When there is a signal at this port, the LCD will automatically switch to the camera image.



2.5mm AUX to RCA adapter cable

wiring diagram of reversing camera

